

Making the right industrial network connection

In today's industrial automation systems ethernet plays a major part. The networks rely on data being passed through the system at high rates to underpin the performance of the network.

The digital performance of a network is subject to the active devices within the networks such as switches and controllers - but it is the passive devices such as cable and connectors which can ultimately determine a networks performance.



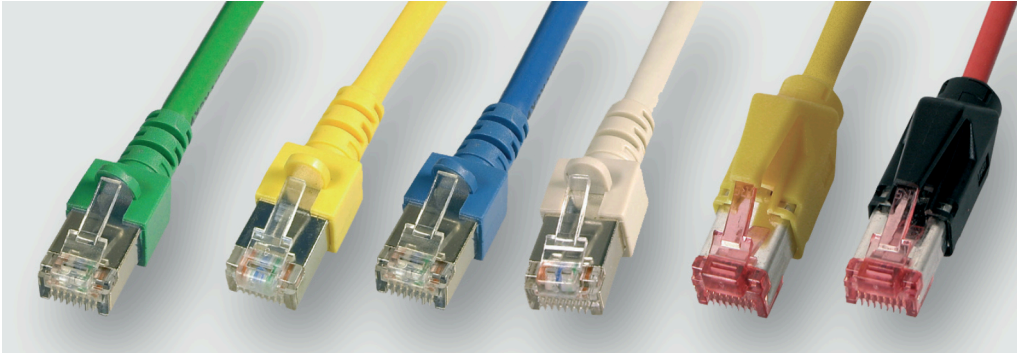
- 1 Protocol**
Select the protocol you are using and follow the steps below as a guide to using our selection table.
- 2 Construction**
How many pairs are required for your application?
- 3 Gauge**
What is the conductor size and construction stranding you require?
- 4 Static, Dynamic or both?**
Do you require the cable for static or continuously moving applications ie in C-Track?
- 5 UL approved**
All Lütze ethernet cables carry UL approval either or in most cases both.
- 6 Straight or Angled, RJ45 or M12?**
If connectors are required, select from right-angled, straight or M12-D or X coded.

PAIRS		2 PAIR			4 PAIR	2 PAIR			2 PAIR			CAT 5	CAT 6A	CAT 6A		
CATEGORY		A	B	C	CAT 6A	CAT 5		CAT 5E	CAT 5			CAT 5	CAT 6A	CAT 6A		
AWG SIZE/STRANDING		AWG 22/1	AWG 22/7	AWG 22/19	AWG 22/1	AWG 22/21	AWG 22/7	AWG 22/19	AWG 26/19	AWG 22/1	AWG 22/7	AWG 22/19	AWG 24/1	AWG 22/1	AWG 26/19	
CABLE	C-TRACK		104303	104302			104303	104302	104379*		104303	104302	104337*		104347	
	STATIC	104301	104307		104397	104301	104307			104301	104307		104336	104397		
CONNECTORS	RJ45 T568B Straight	490177	490177	490177	490174	490177	490177	490177	490177	490177	490177	490177	490174	490174	490176	
	RJ45 T568B 90° Angled	490178	490178	490178	490151	490178	490178	490178	490178	490178	490178	490178	490151	490151	490153	
	RJ45 T568A Straight	490175	490175	490175	490175	490175	490175	490175	490175	490176	490175	490175	490152	490175	490176	
	RJ45 T568A 90° Angled	490152	490152	490152	490152	490152	490152	490152	490152	490153	490152	490152	490152	490152	490153	
	M12 D CODED MALE	490212	490212	490212		490212	490212	490212	490212	490212	490212	490212				
	M12 X CODED MALE				490167									490167	490167	490167
	M12 D CODED FEMALE	490213	490213	490213		490213	490213	490213	490213	490213	490213	490213				
	M12 X CODED FEMALE				490168								490168	490168	490168	

* indicates UR approval only.

PAIRS		2 PAIR					4 PAIR					4 PAIR					
CATEGORY		CAT 5			CAT 5E		CAT 5E			CAT 6		CAT 6A			CAT 7	CAT 6/7	CAT 6
AWG SIZE/STRANDING		AWG 22/1	AWG 22/7	AWG 22/19	AWG 26/19	AWG 24/19	AWG 24/7	AWG 26/7	AWG 26/19	AWG 22/7	AWG 26/19	AWG 22/1	AWG 26/7	AWG 26/7	AWG 24/7	AWG 24/7	
CABLE	C-TRACK		104303	104302	104379*	104337*				104396*	104350	104347*			104401	104404	
	STATIC	104301	104307				104336	104335				104397	104338	104331	490174	490174	
CONNECTORS	RJ45 T568B Straight	490177	490177	490177	490177	490174	490174	490174	490174	490174	490174	490174	490174	490174	490174	490174	
	RJ45 T568B 90° Angled	490178	490178	490178	490178	490151	490151	490151	490151	490151	490151	490151	490153	490153	490153	490153	
	RJ45 T568A Straight	490175	490175	490175	490176	490175	490175	490176	490176	490175	490176	490175	490176	490176	490175	490175	
	RJ45 T568A 90° Angled	490152	490152	490152	490153	490152	490152	490153	490153	490152	490153	490152	490153	490153	490152	490152	
	M12 D CODED MALE	490212	490212	490212	490212												
	M12 X CODED MALE	490167	490167	490167	490167	490167	490167	490167	490167	490167	490167	490167	490167	490167	490167	490167	
	M12 D CODED FEMALE	490213	490213	490213	490213												
	M12 X CODED FEMALE	490168	490168	490168	490168	490168	490168	490168	490168	490168	490168	490168	490168	490168	490168	490168	

* indicates UR approval only.

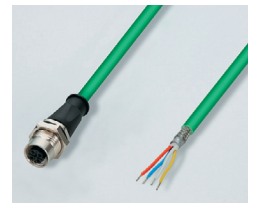


Description	Part No
PATCH CABLE 0.5M GREEN	192030.0050
PATCH CABLE 1.0M GREEN	192030.0100
PATCH CABLE 2.0M GREEN	192030.0200
PATCH CABLE 3.0M GREEN	192030.0300
PATCH CABLE 5.0M GREEN	192030.0500
PATCH CABLE 10.0M GREEN	192030.1000
PATCH CABLE 15.0M GREEN	192030.1500
PATCH CABLE 20.0M GREEN	192030.2000
PATCH CABLE 0.5M GREY	192000.0050
PATCH CABLE 1.0M GREY	192000.0100
PATCH CABLE 2.0M GREY	192000.0200
PATCH CABLE 3.0M GREY	192000.0300
PATCH CABLE 5.0M GREY	192000.0500
PATCH CABLE 10.0M GREY	192000.1000
PATCH CABLE 15.0M GREY	192000.1500
PATCH CABLE 20.0M GREY	192000.2000

Other colours and UL variants available on request

Description	Part No
M12 to RJ45 Superflex Profinet PURcable 0.3M	192013.0030
M12 to RJ45 Superflex Profinet PURcable 1.0M	192013.0100
M12 to RJ45 Superflex Profinet PURcable 2.0M	192013.0200
M12 to RJ45 Profinet PVCcable 0.3M	192014.0030
M12 to RJ45 Profinet PVCcable 1.0M	192014.0100
M12 to RJ45 Profinet PVCcable 2.0M	192014.0200
RJ45 to RJ45 Superflex Profinet PURcable 0.3M	192015.0030
RJ45 to RJ45 Superflex Profinet PURcable 1.0M	192015.0100
RJ45 to RJ45 Superflex Profinet PURcable 2.0M	192015.0200
RJ45 to RJ45 Profinet PVCcable 0.3M	192016.0030
RJ45 to RJ45 Profinet PVCcable 1.0M	192016.0100
RJ45 to RJ45 Profinet PVCcable 2.0M	192016.0200
RJ45 to RJ45 Superflex Ethernet PURcable 0.3M	192017.0030
RJ45 to RJ45 Superflex Ethernet PURcable 1.0M	192017.0100
RJ45 to RJ45 Superflex Ethernet PURcable 2.0M	192017.0200
RJ45 to RJ45 Ethernet PVCcable 0.3M	192018.0030
RJ45 to RJ45 Ethernet PVCcable 1.0M	192018.0100
RJ45 to RJ45 Ethernet PVCcable 2.0M	192018.0200
M12 D Coded Male Profinet/Ethernet connector PUR cable to open end, 2.0M	475300.0200
M12 D Coded Male Profinet/Ethernet connector PUR cable to open end, 5.0M	475300.0500
M12 D Coded Female Profinet/ Ethernet Panel connector PUR cable to open end, 2.0M	475500.0200
M12 D Coded Female Profinet/ Ethernet Panel connector PUR cable to open end, 5.0M	475500.0500
M12 D Coded Male to Male Jumper cable Profinet/ Ethernet, PUR cable 0.3M	475400.0030
M12 D Coded Male to Male Jumper cable Profinet/ Ethernet, PUR cable 1.0M	475400.0100
M12 D Coded Male to Male Jumper cable Profinet/ Ethernet, PUR cable 2.0M	475400.0200
M12 D Coded Male to Male Jumper cable Profinet/ Ethernet, PUR cable 5.0M	475400.0500

Other lengths available on request





Description	Part No
Cat5e 22.5mm shielded RJ45 panel entry	492075
Cat6 22.5mm shielded RJ45 panel entry	492076



Description	Part No
Cat6 RJ45 8pol. Cat.6A	492029



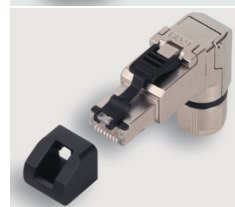
Description	Part No
M12 female D-code 4-pole to RJ45	490105
M12 female D-code 4-pole to RJ45	490106
CAT6	
M12-RJ45 F/F90° 8/8 Cat.6A	490230
M12-RJ45 F/F180° 8/8 Cat.6A	490231
M12-RJ45 F/F90° 8/8 Cat.5	490214
M12-RJ45 F/F180° 8/8 Cat.5	490215



Description	Part No
Ethernet PVC Cat5e (4 x 2 x AWG 26/7StC)	104335
Ethernet PVC Cat5e (4 x 2 x AWG 24/7StC)	104336
Ethernet PVC Cat6a (4 x (2 x AWG 26/7)StC)	104338
Ethernet PUR Cat6 Superflex (4 x 2 x AWG 24/7)	104401
Ethernet PUR Cat7 Superflex (4 x 2 x AWG 24/7)	104404
Ethernet PUR Cat5e Superflex (4 x 2 x AWG 26/19StC)	104396
Ethernet PUR Cat5e Superflex (4 x 2 x AWG 24/19StC)	104337
Ethernet PUR Cat6a Superflex (4 x 2 x AWG 26/19StC)	104347
Ethernet PUR Cat5e Superflex (2 x 2 x AWG 22/7)StC	104302
Profinet Type A (2 x 2 x AWG 22/1)StC	104301
Profinet Type B (2 x 2 x AWG 22/7)StC	104307
Profinet Type B (4 x 2 x AWG 22/7)	104350
Profinet Type C Superflex (2 x 2 x AWG 22/7)StC	104303



Description	Part No
Shielded M12 5-pole male straight connector B-code, Suitable for ProfiBus/InterBus	490210
Shielded M12 5-pole female straight connector B-code, suitable for ProfiBus/InterBus	490211
Shielded M12 4-pole male straight connector D-code, suitable for 2-pair Ethernet/Profinet	490212
Shielded M12 4-pole female straight connector D-code, suitable for 2-pair Ethernet/Profinet	490213
M12 X Coded Male Suitable 4-pair Gigabit Ethernet/ Profinet	490167
M12 X Coded Female Suitable 4-pair Gigabit Ethernet/ Profinet	490168



Description	Part No
Cat6A RJ45 T568B Straight IDC Rewireable Suitable for AWG 24/1,22/1, 27/7, 22/7	490174
Cat6A RJ45 T568B 90deg IDC Rewireable Suitable for AWG 24/1,22/1, 27/7, 22/7	490151
Cat6A RJ45 T568B Straight IDC Rewireable Suitable for AWG 26/1,26/7, 26/19	490176
Cat6A RJ45 T568B 90deg IDC Rewireable Suitable for AWG 26/1,26/7, 26/19	490153
Profinet RJ45 4 Pole Straight IDC Rewireable Suitable for AWG 24/1-22/1, AWG 27/7-22/7, AWG 24/19-22/19	490177
Profinet RJ45 4 Pole 90 deg IDC Rewireable Suitable for AWG 24/1-22/1, AWG 27/7-22/7, AWG 24/19-22/19	490178